



Points of Interest

As entrepreneurs expand and grow their business, the Technology Incubator continues to play an important role in impacting the local economy.



On February 10, 2009, the Technology Incubator hosted a CEO Forum featuring Craig Dresser, Chief Executive Officer and Chairman of the Board for Intercept Corporation.

As of December 31, 2008, the Technology Incubator is pleased to report the following:



Intercept is currently a leading ACH processor handling over 40 million electronic transactions annually. Craig's initial responsibilities were managing the accounting, finance and reporting requirements of the company in conjunction with the operational development, sales, marketing and support. He currently focuses on product development and overall business management.

February 27, 2009

Tenants:	7
Employees:	115
Student Employees:	25
NDSU Graduates:	48
Total Monthly Salaries:	\$1,361,482.54
Annualized Salaries:	\$16,337,790.48
Equity Raised:	\$4,671,575
Grants:	\$838,000

Craig shared his insight to starting and growing a new entrepreneurial venture and the challenges associated with that, current market conditions, and strategies for determining new technologies to implement.

The next CEO Forum event will be held on April 14, 2009.



To Graduate from Technology Incubator...

On February 23, 2009, the Technology Incubator hosted a reception for Intelligent InSites to honor them as they graduate from the incubator.

Since entering the Technology Incubator in October 2007, Intelligent InSites has experienced growth of more than 450% in employee count and achieved 500% growth in closed sales revenue. This is a result of successfully growing the customer base by more than 400% in that same time. Intelligent InSites clients include hospitals, skilled nursing facilities, and assisted living communities across the United States and Canada.

"Being a part of the Technology Incubator has been a wonderful experience for Intelligent InSites. Not only are the facilities themselves world class, but the value added services that have been provided have enabled us to focus on growing our business and taking care of our clients." says Mark Rheault, President and CEO of Intelligent InSites. "It's been an exciting year as we've built a strong team and accomplished much, and there is no doubt that the benefits of the Park have played a part in that success."

In the past year at the Incubator, Intelligent InSites has also completed its angel investor round and secured its first round of institutional investment. That round was led by Arthur Ventures, which included adding Doug Burgum, former CEO of Great Plains and Senior Executive at Microsoft, to its Board of Directors. Intelligent InSites is also proud to be the first investment made by the regional angel investment funds in Bismarck-Mandan and Fargo-Moorhead. Just recently, Intelligent InSites was honored with nominations for the 2009 Fargo-Moorhead Chamber of Commerce "Small Business of the Year" as well as the "Entrepreneur of the Year" awards.

Volume 2, Issue 2

Incubator Tenants

- Appareo Systems, LLC
- Avenue Right
- Bobcat Company
- Feed Management Systems
- Intelligent InSites
- NDSU RFID Wire and Sensor Lab
- Pedigree Technologies
- NDSU Research & Technology Park Offices

Did You Know...

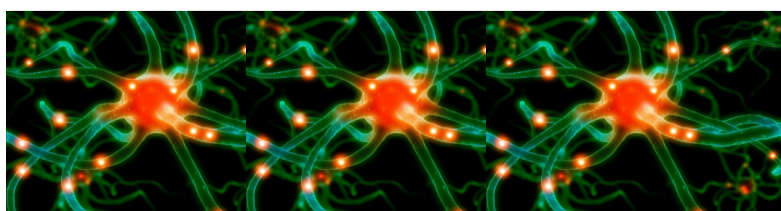
This year, Sony played a video at its executive conference asking the question of Did You Know. A few of the interesting facts have been listed below. To view the entire updated Did You Know piece, please click on the following link <http://www.youtube.com/watch?v=cL9Wu2kWwSY>

China will soon become the NUMBER ONE English speaking country in the world.

The 25% of India's population with the highest IQ's is greater than the total population of the United States.

The top 10 in-demand jobs in 2010 did not exist in 2004.

By 2013, a supercomputer will be built that exceeds the computational capabilities of the human brain.



Staff

Tony Grindberg
Executive Director
tony@ndsuresearchpark.com

Brenda Wyland
Incubator Manager
brenda@ndsuresearchpark.com

Jan Sobolik
Executive Assistant
jan@ndsuresearchpark.com

Sharon Miller
Talent Specialist
sharon@ndsuresearchpark.com

Kelly Correll
RAIN Fund Investment Analyst
kelly@ndsuresearchpark.com

Hannah Kusler
Business Development Assistant
hannah@ndsuresearchpark.com

Mike Olson
Business Operations Assistant
michael@ndsuresearchpark.com

